

INCIDENTAL LUNG CANCER ON SCREENING CALCIUM SCORING CT

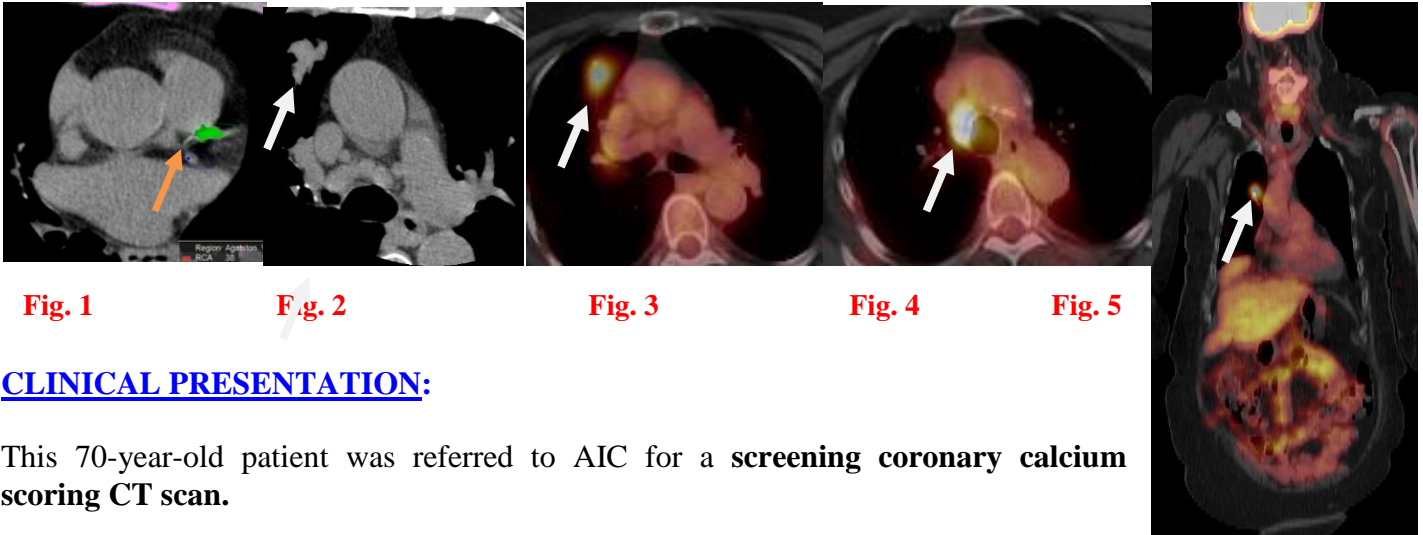


Fig. 1

Fig. 2

Fig. 3

Fig. 4

Fig. 5

CLINICAL PRESENTATION:

This 70-year-old patient was referred to AIC for a **screening coronary calcium scoring CT scan**.

IMAGING FINDINGS:

Fig. 1-2 are axial images of a CT calcium scoring scan. They demonstrated coronary calcifications (*orange arrow*) with a score of 380 (moderate risk for significant coronary artery disease). However, incidentally, a RUL opacity was noted. Further workup with a dedicated CT and **dedicated PET-CT (Fig. 3-5)** revealed a hypermetabolic mass in the RUL with right paratracheal adenopathy (*white arrows*).

DIAGNOSIS:

Biopsy proved **LUNG CANCER** incidentally discovered on a screening coronary calcium scoring scan.

DISCUSSION:

It is important to evaluate the visualized portions of the lungs on a coronary scan to rule out lung pathology including potential lung cancer. In fact, it might be worthwhile to request a chest CT while ordering a CT calcium scoring test. In patients with history of smoking, **LOW-DOSE CT LUNG CANCER SCREENING** (payable by Medicare if certain criteria are met) could pick up an incidental lung cancer in an early stage when it is resectable.

Ray Hashemi, MD

Ray H. Hashemi, M.D., Ph.D.

Diplomat American Board of Radiology